

## Steckscheiben *Line-Blinds*

SV/SL

### Einsatzgrenzen (Pressure/Temperature Ratings)

|       | TMA (°C)  | -10 | 100 | 200 | 300 | 400 |
|-------|-----------|-----|-----|-----|-----|-----|
| PN 40 | PMA (bar) | 40  | 40  | 38  | 32  | 22  |

### Werkstoffe (Materials)

| SV/SL 1 | SV/SL 2 | SV/SL 3 |
|---------|---------|---------|
| 1.0577  | 1.4301  | 1.4571  |

### Einbau (Installation)

Passend zwischen Flansche EN 1092-1  
*For fitting between flanges acc. to EN 1092-1*

Sonderwerkstoffe und Ausführung nach speziellen Werknormen auf Anfrage  
*Special materials and constructions on request*



DN 15 - 500  
PN 6 - 40



Technische Änderungen vorbehalten 12/2008  
*Technical modifications reserved 12/2008*

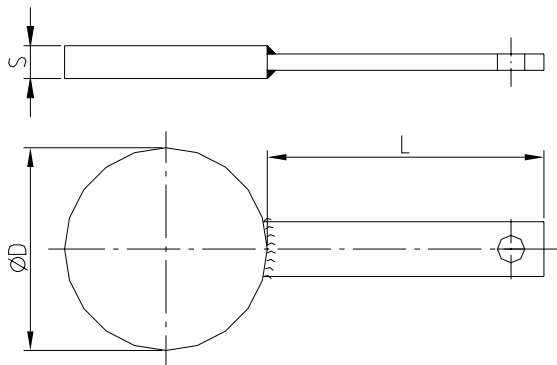
# Steckscheiben Line-Blinds

SV/SL

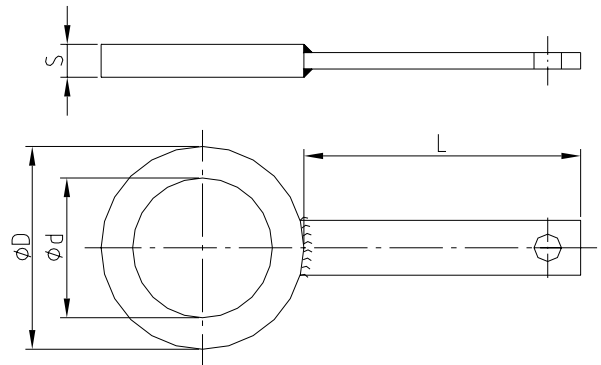
## Maße (Dimensions) in mm

| DN  | PN10 |     |     |    | PN16 |     |     |    | PN25 |     |     |    | PN40 |     |     |    |
|-----|------|-----|-----|----|------|-----|-----|----|------|-----|-----|----|------|-----|-----|----|
|     | L    | D   | d   | S  | L    | D   | d   | S  | L    | D   | d   | S  | L    | D   | d   | S  |
| 15  | 125  | 51  | 19  | 5  | 125  | 51  | 19  | 5  | 125  | 51  | 19  | 5  | 125  | 51  | 19  | 5  |
| 20  | 125  | 61  | 25  | 5  | 125  | 61  | 25  | 5  | 125  | 61  | 25  | 5  | 125  | 61  | 25  | 5  |
| 25  | 125  | 71  | 32  | 5  | 125  | 71  | 32  | 5  | 125  | 71  | 32  | 5  | 125  | 71  | 32  | 5  |
| 32  | 125  | 82  | 40  | 5  | 125  | 82  | 40  | 5  | 125  | 82  | 40  | 5  | 125  | 82  | 40  | 5  |
| 40  | 125  | 92  | 46  | 5  | 125  | 92  | 46  | 5  | 125  | 92  | 46  | 5  | 125  | 92  | 46  | 5  |
| 50  | 130  | 108 | 58  | 8  | 130  | 108 | 58  | 8  | 130  | 108 | 58  | 8  | 130  | 108 | 58  | 8  |
| 65  | 130  | 127 | 74  | 8  | 130  | 127 | 74  | 8  | 130  | 127 | 74  | 8  | 130  | 127 | 74  | 8  |
| 80  | 130  | 142 | 86  | 8  | 130  | 142 | 86  | 8  | 130  | 142 | 86  | 8  | 130  | 142 | 86  | 8  |
| 100 | 130  | 162 | 112 | 8  | 130  | 162 | 112 | 8  | 130  | 168 | 112 | 10 | 130  | 168 | 112 | 10 |
| 125 | 130  | 192 | 135 | 8  | 130  | 192 | 135 | 8  | 140  | 194 | 135 | 15 | 140  | 194 | 135 | 15 |
| 150 | 130  | 218 | 165 | 8  | 130  | 218 | 165 | 8  | 140  | 224 | 165 | 15 | 140  | 224 | 165 | 15 |
| 200 | 130  | 273 | 215 | 10 | 130  | 273 | 215 | 15 | 140  | 284 | 215 | 15 | 140  | 290 | 215 | 20 |
| 250 | 130  | 328 | 270 | 10 | 130  | 328 | 270 | 15 | 140  | 340 | 270 | 20 | 140  | 352 | 270 | 25 |
| 300 | 150  | 378 | 320 | 15 | 150  | 378 | 320 | 15 | 150  | 400 | 320 | 20 | 150  | 417 | 320 | 25 |
| 350 | 150  | 438 | 365 | 15 | 150  | 444 | 365 | 20 | 150  | 457 | 365 | 25 | 150  | 474 | 365 | 30 |
| 400 | 160  | 489 | 415 | 15 | 160  | 495 | 415 | 20 | 160  | 514 | 415 | 25 | 160  | 546 | 415 | 35 |
| 500 | 160  | 594 | 515 | 20 | 160  | 617 | 515 | 25 | 160  | 624 | 515 | 30 | 160  | 628 | 515 | 40 |

### Type SV



### Type SL



Technische Änderungen vorbehalten 12/2008  
Technical modifications reserved 12/2008