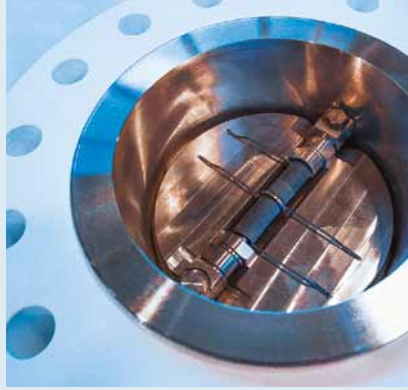


Valve Experience.
Made in Germany.



Ready for your
challenges

Company Profile

Welcome to RITAG

Valve Experience. Made in Germany.

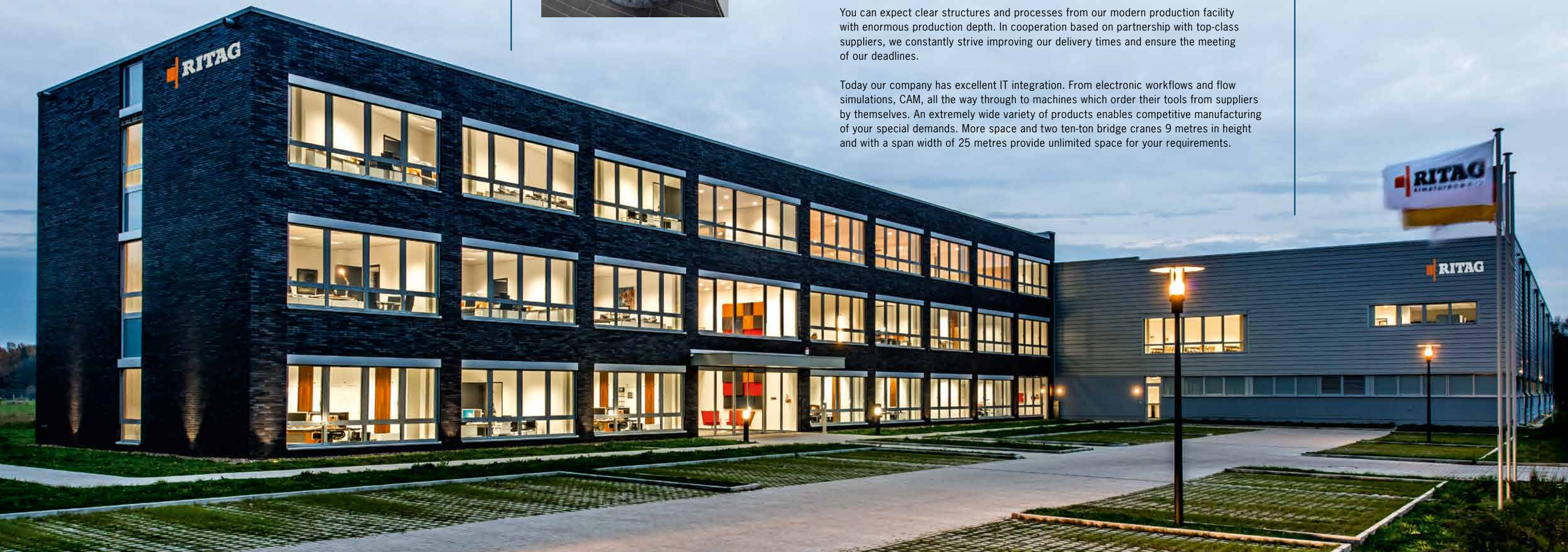
Had our company founder, Subrat Chatterjee, been able to look into the future back in 1974, there's no doubt he would have been very proud of our company's development. Today we would like to welcome you with this company profile in our new building completed in 2014. More than 80 dedicated employees are working with us to meet your demands and requirements on time and within budget to a high "Made in Germany" level of quality. One of the most modern production facilities for industrial valves in Europe is located on some 6,500 m² of office and production space as well as a site of approx. 28,000 m². Our check valves, tank bottom valves and sampling systems are developed, manufactured and tested in Germany and leave our production "Made in Germany" to be installed in plants and applications all over the world.



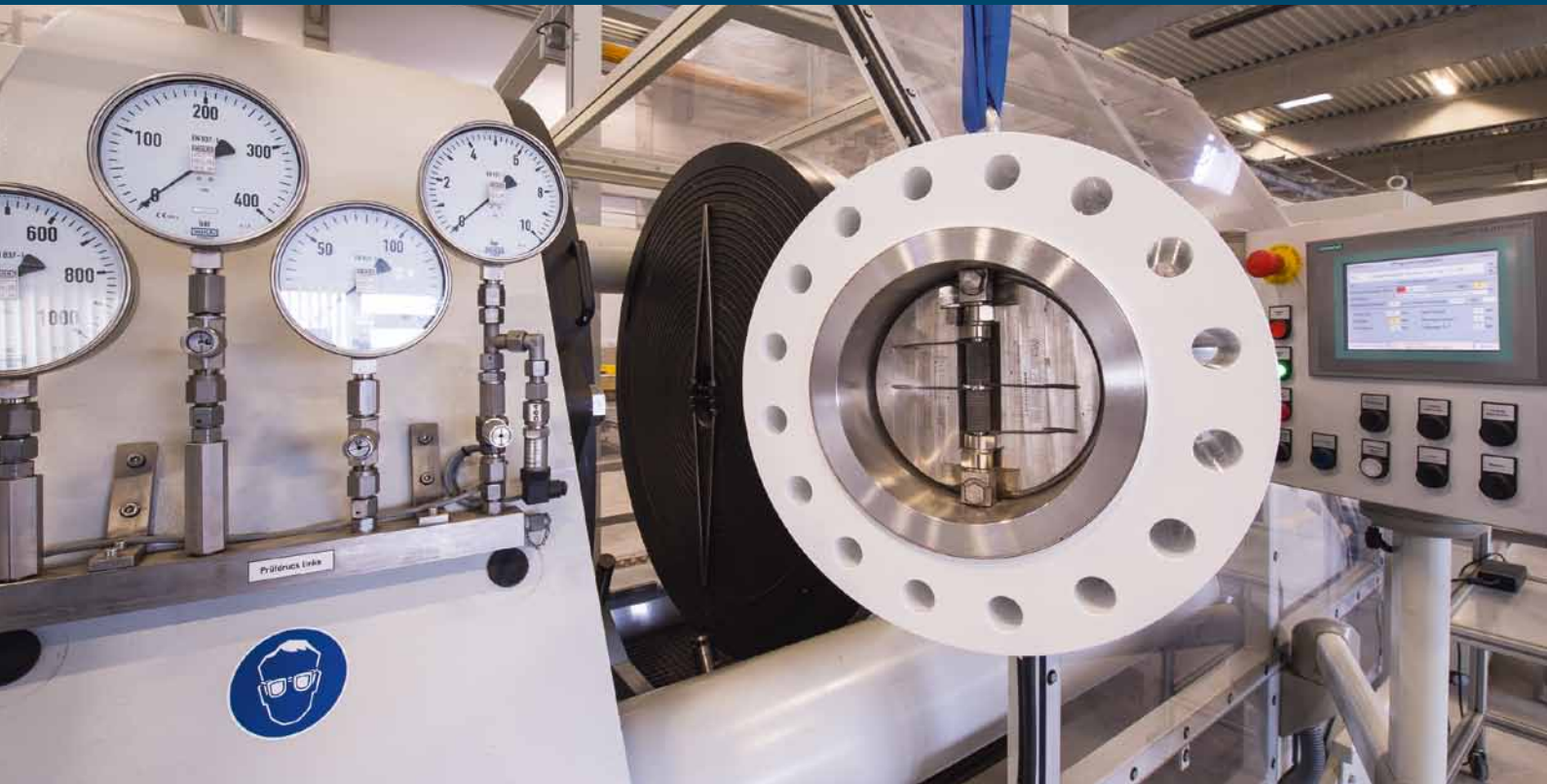
State-of-the-art Production and Manufacturing

You can expect clear structures and processes from our modern production facility with enormous production depth. In cooperation based on partnership with top-class suppliers, we constantly strive improving our delivery times and ensure the meeting of our deadlines.

Today our company has excellent IT integration. From electronic workflows and flow simulations, CAM, all the way through to machines which order their tools from suppliers by themselves. An extremely wide variety of products enables competitive manufacturing of your special demands. More space and two ten-ton bridge cranes 9 metres in height and with a span width of 25 metres provide unlimited space for your requirements.



RITAG Quality



Testings and Inspections

- PMI Positive Material Identification
- RT Radiographic Test
- UT Ultrasonic Testing
- DPT/LPT Dye Penetrant Test/Liquid Penetrant Test
- MPI Magnetic Particle Inspection
- CRYO Cryogenic Leakage Test
- ST Shell Test
- LPCT Low Pressure Closure Test
- HPCT High Pressure Closure Test
- DC Dimensional Check
- DFT Dry Film Thickness

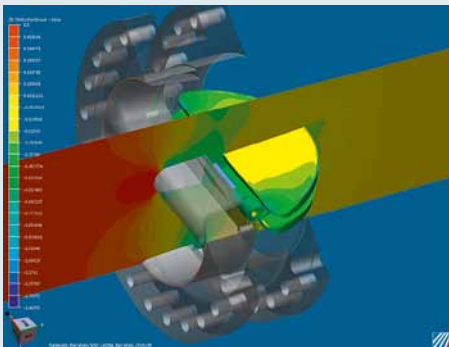
Non-destructive testing is an important component of our professional production.

Special requirements can be met together with accredited specialist laboratories to the highest level of quality.

Engineering and Development

More than 40 years of experience and close cooperation with EPC's and end-users form the basis for our problem-solving expertise.

Equipped with modern tools, such as 3D CAD, FEM, CFD, CAM and much more, we go about meeting your demands and, together with you, we find solutions that go way beyond the norm. In so doing, it is important to us that our solution impresses you; regardless of whether it involves simple maintenance, special materials or particular system conditions.



Integrated Management

Continuous improvement in all aspects is what drives us. We take responsibility for our customers, for our employees and for the environment.

Clear structures, stable processes and a dedicated team guarantee the exceptional quality of our products. And if an error still occurs, our deviation management ensures that it doesn't happen a second time.

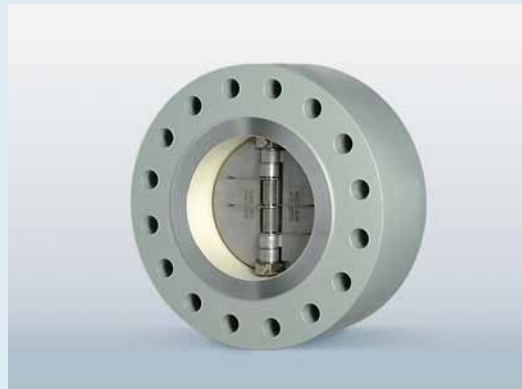


Project Handling

- PIM Pre-Inspection-Meeting
- KOM Kick-Off-Meeting
- BCD Bid Closing Date
- ITP Inspection & Test Plan
- TPI Third Party Inspection
- FAT Factory Acceptance Test
- FINAL Final Acceptance Test
- VDRL Vendor Document Requirement List
- MRB Manufacturer Record Book
- DB Data Book
- VDR Vendor Data Register
- QM Quality Manual
- IM-Manual Integrated Management Manual
- MTC Material & Test Certificates
- IOM Instruction Manual
- GA General Arrangement Drawing
- DS Data Sheet
- IN Inspection Notification
- IRN Inspection Release Note
- SRN Shipping Release Note
- NCR Non-Conformity Report
- PPR Project Progress Report
- PS Project Schedule
- SSL Sub Supplier List
- MOS Material Order Status
- WPS Welding Procedure Specification
- PQR Procedure for Qualification Record
- HTR Forming and Heat Treatment Procedure
- PWHT Post Weld Heat Treatment
- IFS Instructions for Storage
- CRA Corrosion Allowance
- COC Certificate of Compliance
- COO Certificate of Origin
- SPIR Spare Parts Interchangeable Record
- PACK Packing Procedure
- DT Document Transmittal



RITAG Product Range



RITAG Brochures

Wafer Type Check Valves:

- Wafer Type Lift Check Valves
- Wafer Type Swing Check Valves
- Wafer Type Dual Plate Check Valves



■ RITAG Wafer Type Check Valves



■ RITAG Tank Bottom Valves



■ RITAG Sampling Valves



■ RITAG Clean Service

Valve Experience.
Made in Germany.



RITAG Markets and References

Oil and Gas Industry

- ADCO
- ARAMCO
- GASCO
- Gaz de France
- Indian Oil Corporation
- OMV
- Shell
- Statoil
- Total
- Wintershall
- ZADCO

EPC's

- Air Liquide
- Daelim
- Linde
- Lurgi
- NPCC
- Petrofac
- Saipem
- Technip
- ThyssenKrupp Industrial Solutions (Uhde)
- Toyo Engineering

Shipbuilding

- Abeking & Rasmussen
- Daewoo
- Fincantieri
- HDW
- Lürssen
- Meyer-Werft
- Nordic Yards
- Shanghai Edwards Shipyards
- Wadan Yards
- Zhonghua Shipyard Shanghai

Petrochemical-, Chemical- and Pharmaceutical Industry

- BASF
- BAYER
- Boehringer
- CF Industries
- Clariant
- DOW
- Evonik
- Lanxess
- Roche
- SABIC
- Sanofi Aventis

General Industry, Power Plants

- ABB
- ArcelorMittal
- AEL
- Alderley
- Atlas Copco
- GEA
- Kraftanlagen
- MAN
- Mannesmann
- Siemens

RITAG Representatives

- Germany
- Australia
- Austria
- Bahrain
- Belgium
- Brazil
- Chile
- Czechia
- Denmark
- Egypt
- Finland
- France
- Great Britain
- Hong Kong
- Hungary
- India
- Indonesia
- Iran
- Ireland
- Italy
- Japan
- Malaysia
- Mexico
- The Netherlands
- Nigeria
- Norway
- Poland
- Portugal
- PR China
- Qatar
- Russia
- Saudi Arabia
- Singapore
- Slovakia
- South Africa
- South Korea
- Spain
- Sweden
- Switzerland
- Taiwan
- Thailand
- UAE
- USA

RITAG

Ritterhuder Armaturen GmbH & Co.
Armaturenwerk KG
Sachsenring 30
27711 Osterholz-Scharmbeck
Germany

Phone +49 (0) 47 95-5 50 42-0
Fax +49 (0) 47 95-5 50 42-850
E-mail contact@ritag.com
Internet www.ritag.com